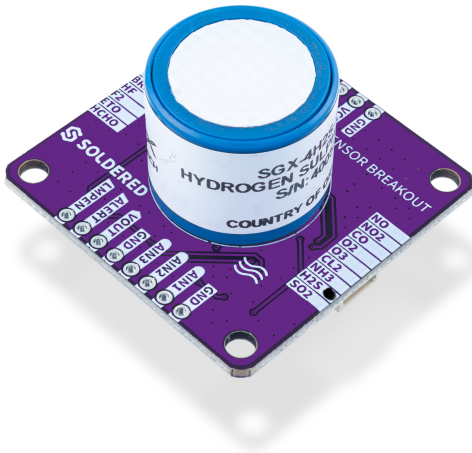




HIGH PRECISION ELECTROCHEMICAL H₂S GAS SENSOR BREAKOUT



Weight	11.5 g
Dimensions	3.8 × 3.8 × 2.5 cm

DESCRIPTION

Ensure a safe and healthy environment with our High-Precision Electrochemical H₂S Gas Sensor Breakout. This advanced sensor module is specifically designed to detect hydrogen sulfide (H₂S) with exceptional accuracy, making it ideal for a range of applications, from industrial monitoring to environmental studies.

The breakout board works with both 3.3V and 5V power supplies. The EasyC connector provides a fast and easy connection with the microcontroller board. The board provides both analog and digital output with integrated ADC. The analog front end is fully programmable with I2C communication.

This breakout board is perfect for industrial safety, environmental monitoring, and research projects and provides a reliable foundation for precise gas detection solutions. Integrate this sensor into your systems to ensure timely alerts and maintain optimal safety standards.

FEATURES

- Accurately measures H₂S levels, providing reliable data for various applications.
- Compatible with microcontrollers like Arduino and Raspberry Pi, featuring an I²C interface for straightforward communication and data acquisition.
- Four mounting holes for secure and easy installation.
- Built to withstand various environmental conditions, ensuring long-term reliability.
- Connectors: easyC
- Detects/Measure: Hydrogen sulfide (H₂S)
- Detection range: 0-100 ppm
- Sensor output signal: 1200 nA/ppm
- Operating Voltage: 5V on header (3.3V easyC)



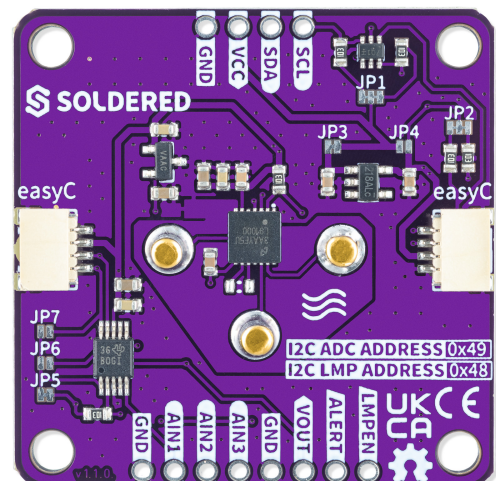
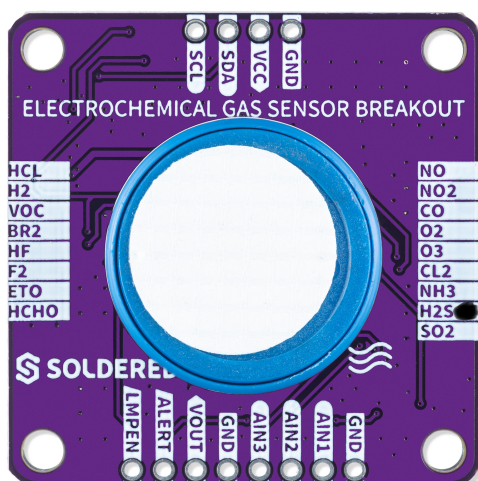
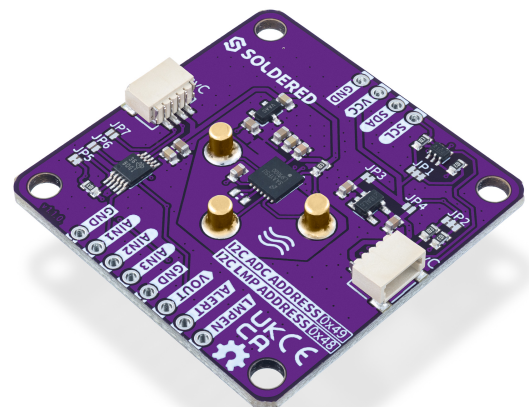
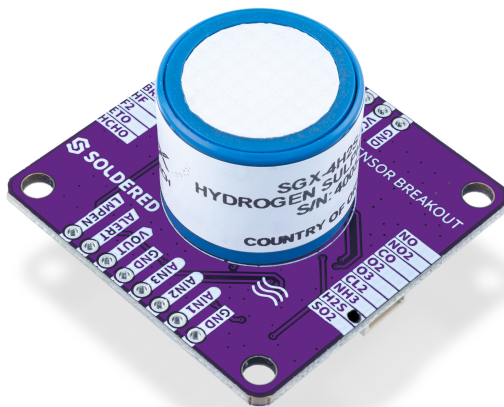
- Dimensions: 38 mm x 38 mm / 1.5" x 1.5"

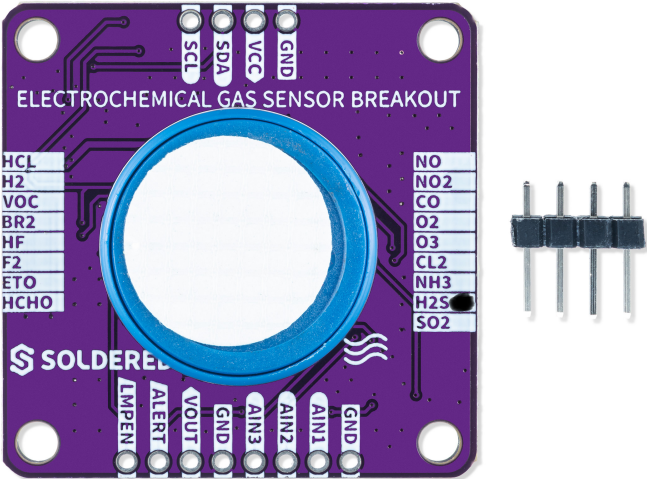
USEFUL LINKS

TIPS

By integrating the sensor with the appropriate electronic circuits and microcontrollers, such as Arduino or Raspberry Pi, you can create systems that monitor and analyze the concentration of gas in real-time. This capability allows you to take necessary actions promptly to maintain a healthy and safe environment. Enhance your gas detection capabilities with this high-precision H₂S sensor breakout, ensuring timely alerts and optimal safety in your monitoring systems.

OTHER IMAGES





Weight	11.5 g
Dimensions	3.8 × 3.8 × 2.5 cm